



# SAN GABRIEL MOUNTAINS FOREVER

2016 IMPACT REPORT





For more than a decade, **San Gabriel Mountains Forever (SGMF)** has worked to protect, enhance, and provide community access to forests, rivers, and parks in Los Angeles. We have developed a new, diverse partnership of local residents, cities, businesses, faith and community leaders, health and environmental justice organizations, and recreation and conservation groups working collaboratively with local communities and elected leaders.

**SGMF** is best known as the lead community group building support for the designation of the San Gabriel Mountains National Monument established by President Obama in 2014.

- Amigos de los Rios***
- Asian Pacific Policy and Planning Council***
- Bike San Gabriel Valley***
- California Wilderness Coalition***
- Climate Resolve***
- Consejo de Federaciones Mexicanas en Nortemérica***
- Community Hiking Club***
- Friends of the River***
- The City Project***
- National Parks Conservation Association***
- The Sierra Club***
- The Wilderness Society***
- Trout Unlimited (welcome to our new member!)***



CALIFORNIA  
WILDERNESS  
COALITION  
*The Voice for Wild California*



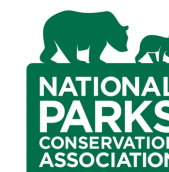
Council of Mexican Federations



FRIENDS  
OF THE  
RIVER



The  
City  
Project



SIERRA  
CLUB



THE  
WILDERNESS  
SOCIETY



TROUT  
UNLIMITED




The three photos on this page give insight into what made 2016 such a successful year for San Gabriel Mountains Forever. First, you see magnificence of the land. As long as the San Gabriel Mountains stand, we will continue to work on the protection and enhancement of our mountains, rivers, and parks.

Next, you see an image to represent our work to make connections. In addition to increasing protections for our public lands, we are making sure our communities can enjoy them.

Finally, you see SGMF staffers working with local leaders to make sure we achieve our goals. I'm proud to report that in 2016, SGMF succeeded in making sure:

- Measure A passed by a landslide. Measure A will provide much-needed funding for active and passive parks, and other cultural amenities.
- Measure M passed, with 71% of LA voters behind Metro's transformative transportation tax to provide more public transit, green infrastructure, and transit to parks.
- Transit to Trails pilot programs were launched, providing shuttle services to trails and recreation areas.
- The U.S. Forest Service relied on our input to develop the San Gabriel Mountains Monument Plan and to make sure it is a monument for all Angelenos.

Whatever challenges we face in 2017 will be met with resolve and determination to continue to protect our region's open spaces.

  
Chair, San Gabriel Mountains Forever





## TABLE OF CONTENTS

Timeline.....	4
Protecting Our Mountains and Parks.....	5-6
Map.....	7-8
Access and Environmental Justice for All.....	9-11
Leadership Development.....	12-13
Community Engagement.....	14
Looking Ahead.....	15

# SGMF History

**Introduction of a San Gabriel Mountains Wilderness bill** by Congressman David Dreier. San Gabriel Mountains Forever Leadership Academy started in 2011.



2011

**Introduction of the San Gabriel Mountains National Recreation Area Bill** by Congresswoman Judy Chu.

**Proclamation by President Barack Obama** established the San Gabriel Mountains National Monument.



2014

**Leadership Academy's 10th cohort** graduation, bringing total graduates to 93, with 36 community engagement projects launched.

**Measure A for Parks and Measure M for Transportation** passed by wide margins with significant SGMF policy input and advocacy.



2016

2008



**San Gabriel Mountains Forever launched** featuring a unique group of social justice and environmental organizations, including COFEM, The City Project, Sierra Club, The Wilderness Society and the California Wilderness Coalition. This is SGMF's official beginning, although its origin goes back to the early 2000's with Sierra Club's Southern California Forests Campaign.

2012 / 2013



**Generated over 10,000 comments** to the San Gabriel Mountains and Watershed Special Resource Study authorized by then-Congresswoman Solis. We secured support for the recommendations in the study by water agencies, the San Gabriel Valley Council of Governments and a host of elected officials.

2015



**Introduction of the San Gabriel Mountains National Monument Expansion and National Recreation Area bill** by Congresswoman Judy Chu.

A3PCON, Amigos de los Rios, COFEM, The Wilderness Society, Community Hiking Club, The Sierra Club, The City Project and SGMF affirmed as **members of the San Gabriel Mountains Community Collaborative.**

**Five Year Impact Goals and Metrics** were adopted by the coalition as well as a path toward becoming a 501c3 organization.



Students from Westmont Elementary School in Pomona play in the East Fork area during a field trip funded in partnership between Keen and Bike San Gabriel Valley.

The permanent protection and enhancement of our forest, foothills, parks, watersheds and rivers is essential for vibrant and healthy communities. By supporting and implementing policies, programs and projects, we work to:

- Enhance, develop, and restore our forest, foothills, parks, watershed and river parkways.
- Safeguard our water supply.
- Keep our air clean and defend against climate change.

*"The designation of the San Gabriel Mountains as a national monument was an important step towards making our mountains healthy again, but we still have a long road ahead in order to see that goal through. SGMF's role in helping support legislation to expand the National Monument and establish a National Recreation Area (NRA) along the foothills and San Gabriel River corridor is critical to completing the vision of a city seamlessly and sustainably connected to its mountains, and mountains that are accessible for all."*

**- Congresswoman Judy Chu (D)**



Congresswoman Judy Chu celebrates the pilot shuttle program that took riders from the Arcadia Gold Line Station to Chantry Flats.

## Protecting the San Gabriel Mountains National Monument

- Coalition members provided significant input through the Community Collaborative to the Monument Plan.
- Rallied community members to Forest Service public meetings and collected thousands of letters of support for our objectives, which included protections for the Monument's waters and habitats.



Leadership Academy graduate, Mireille Arizmendi gathering petition signatures at a community event in Pacoima.

## Projects Completed and Breaking Ground

- Hosted public meetings to help influence the design of the East Fork/Cattle Canyon project plan to include components to serve community needs.
- Supported the upper San Gabriel River East Fork Mining Study to prevent impacts to fish habitat.

## Victories for Parks

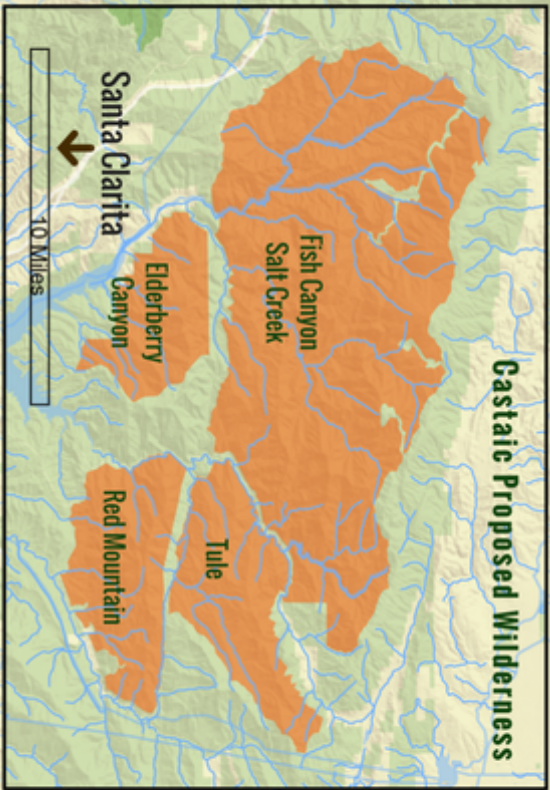
- Served as a catalyst and founding member of OurParks coalition, which led to the introduction of a parks measure championed by Supervisor Hilda Solis.
- Supported and helped pass Measure A by a landslide, which provides significant resources for the SGMF Vision.
- Led community outreach meetings to help prioritize park projects in Los Angeles County.
- Supported member organizations in their efforts to break ground on new parks, including the Jeff Seymour Family Center in El Monte.



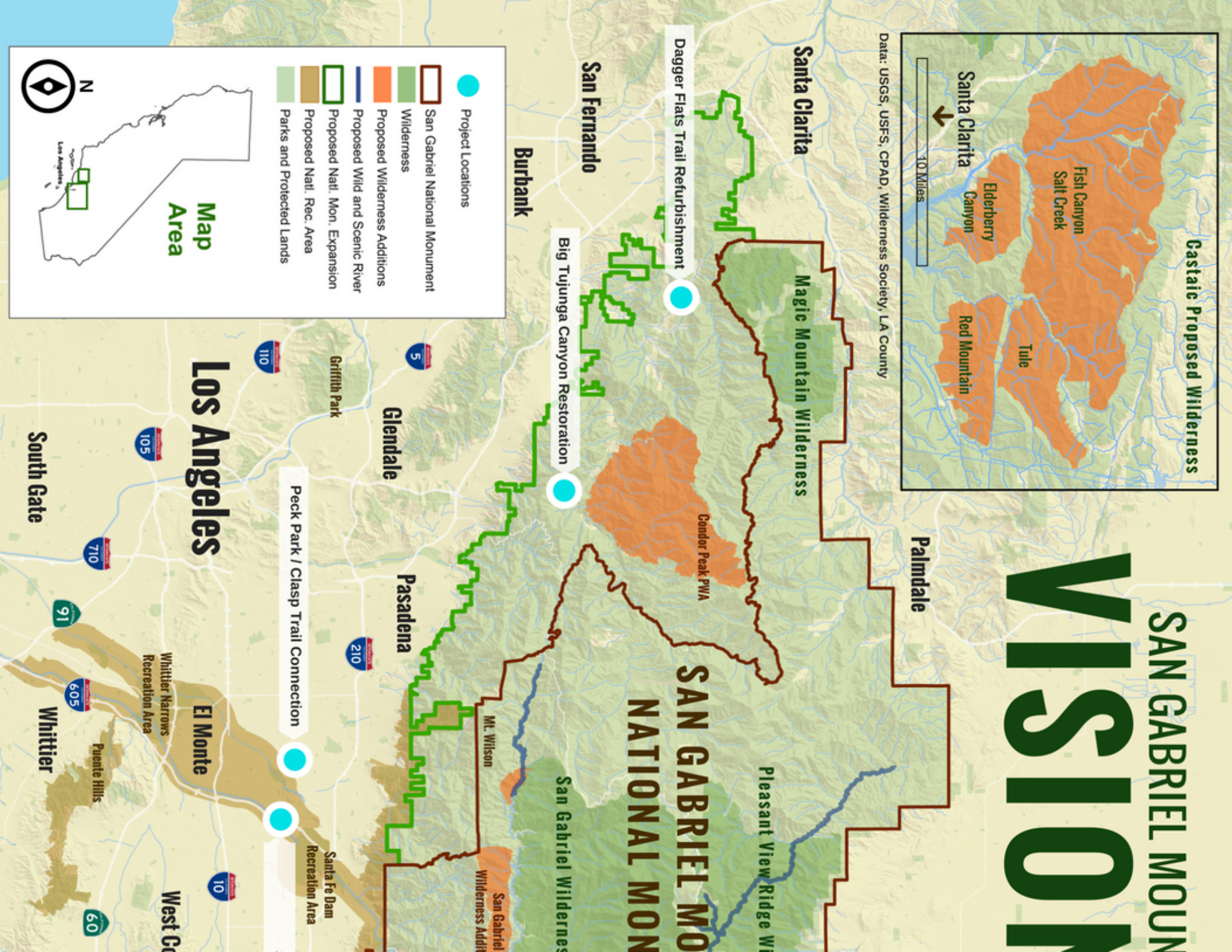
(L to R) L.A.C. Parks and Rec. Regional Operations Manager Jane Beesley, Supervisor Hilda Solis, L.A.C. Parks and Rec. Director John Wicker, Omar Gomez, L.A.C. Parks and Rec. Chief Deputy Director Norma E. Garcia.

# VISION

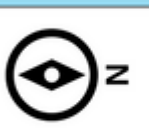
## SAN GABRIEL MOUNTAINS



Data: USGS, USFS, CPAD, Wilderness Society, LA County



- Project Locations
- San Gabriel National Monument
- Wilderness
- Proposed Wilderness Additions
- Proposed Wild and Scenic River
- Proposed Natl. Mon. Expansion
- Proposed Natl. Rec. Area
- Parks and Protected Lands



Map Area

Los Angeles

San Fernando

Burbank

Santa Clarita

Palmdale

Glendale

Pasadena

El Monte

West Cov

South Gate

Whittier

Peck Park / Clasp Trail Connection

Dagger Flats Trail Refurbishment

Big Tujunga Canyon Restoration

SAN GABRIEL MOUNTAINS NATIONAL MONUMENT

Magic Mountain Wilderness

Condor Peak PWA

Pleasant View Ridge W

San Gabriel Wilderness

San Gabriel Wilderness Addition

Mt. Wilson

Santa Fe Dam Recreation Area

Whittier Narrows Recreation Area

Puente Hills

Griffith Park

105

710

91

605

60

5

210

10

110



# MOUNTAINS FOREVER MAP

## FOREVER GRATEFUL TO OUR FUNDING PARTNERS

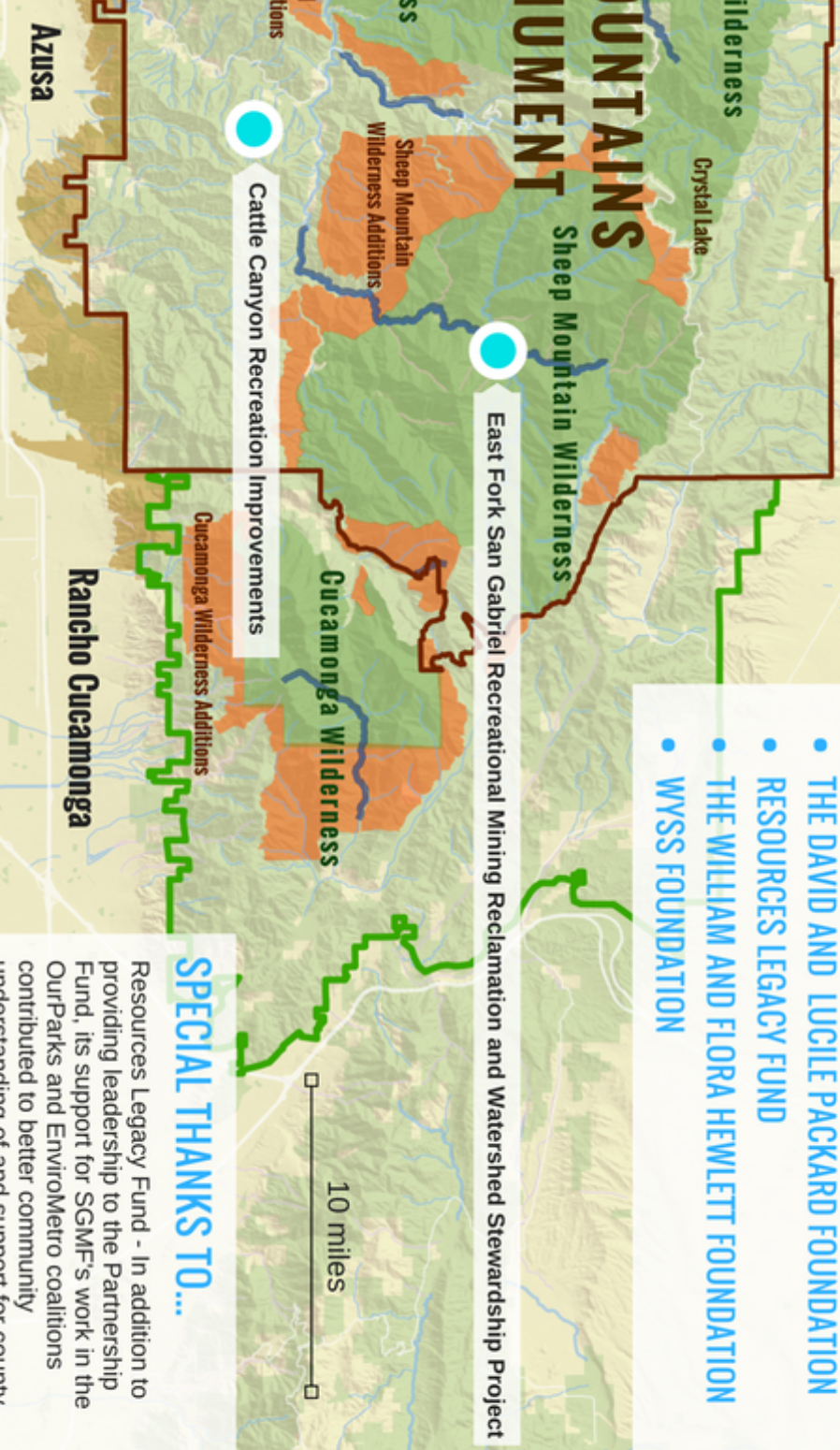
San Gabriel Mountains Forever has had the tremendous honor to work with visionary funders who understand the importance of coalition building, particularly in diverse, urban communities.

**We are deeply grateful for their support!**

- **SAN GABRIEL PARTNERSHIP FUND**

Through the generous support of donors inspired by the San Gabriel Mountains National Monument proclamation by President Obama, SGMF was able to work on six exciting projects (shown on the map) in the San Gabriel National Monument, the Angeles National Forest, and the Emerald Necklace, which provide recreational opportunities for over 10 million Angelenos.

- **THE ANNENBERG FOUNDATION**
- **CALIFORNIA COMMUNITY FOUNDATION**
- **THE CALIFORNIA ENDOWMENT**
- **THE DAVID AND LUCILE PACKARD FOUNDATION**
- **RESOURCES LEGACY FUND**
- **THE WILLIAM AND FLORA HEWLETT FOUNDATION**
- **WYSS FOUNDATION**



## SPECIAL THANKS TO...

Resources Legacy Fund - In addition to providing leadership to the Partnership Fund, its support for SGMF's work in the OurParks and EnviroMetro coalitions contributed to better community understanding of and support for county parks and transportation issues. Effective in both the policy and community base-building arenas, we thank Resources Legacy Fund for supporting our communications efforts around exciting community projects.

We want to thank Pew Charitable Trusts, which serves both as a supporter, and invaluable campaign colleagues. We sincerely thank our individual and anonymous donors who have played such an important role over the years in helping to grow and inspire the conservation community of Southern California.

San Gabriel Greenway - Santa Fe Dam to Whittier Narrows: Phase II

Frank G. Bonelli  
Regional Park

Pomona

Chino

Chino Hills  
State Park

Yorba Linda

## Protecting the San Gabriel Mountains National Monument

Access to the great outdoors -- to wild, open, and green space -- should be available to all of our fellow Angelenos, regardless of race, color, national origin, or socioeconomic levels, in accordance with environmental and health justice laws and principles. We work to:

- Provide more access, including public transit options, to our mountains, parks, and rivers.
- Improve and increase recreational visitor facilities and services with culturally appropriate engagement.
- Create and improve urban parks and open space.

*"The City of Duarte initiated the shuttle program to Fish Canyon Falls because we know that there are people who live no more than 15 miles from here who have never visited the San Gabriel Mountains. And now that we have the Gold Line operational we want to make Fish Canyon Falls available for all to enjoy this fantastic resource."*

**-Metro Board Chair and Duarte City Council Member  
John Fasana**



*Metro Board Chair and Duarte City Council Member, John Fasana speaking at the launch of the Duarte Gold Line Station shuttle to Fish Canyon Falls.*

## Ensuring Victories for Access and Public Transportation

- Influenced the Monument Plan: Community members attended public meetings and submitted hundreds of letters of support for our objectives, which include urging the U.S. Forest Service to ensure compliance with and enforcement of Title VI of the Civil Rights Act of 1964.
- Started the EnviroMetro Coalition: The new coalition committed to green, equitable, and healthy transportation in Los Angeles was formed by the SGMF members to achieve green transportation policy outcomes in Los Angeles.
- Influenced Metro and Local Governments: SGMF secured a Metro policy to develop a Transit to Parks Plan and helped to prioritize the Emerald Necklace Greenway project for Measure M funding in cooperation with the San Gabriel Valley Council of Governments.



Members of COFEM reviewing materials at an SGMF booth.



Community members at the 2014 community meeting on the San Gabriel Mountains.

## Championing Transit to Trails Pilots

- Partnered with the City of Duarte to promote and support a free shuttle program from the Duarte Gold Line Station to the Fish Canyon Falls trailhead.
- Championed the free shuttle demonstration project funded by the Forest Service from the Arcadia Gold Line Station to Chantry Flats.



Launch of Duarte's shuttle service from the Duarte Gold Line Station to Fish Canyon Falls trailhead.



Congresswoman Grace Napolitano with students from Cortada Elementary, El Monte.

## Getting Kids Outdoors

- Worked with the U.S. Forest Service in recruiting and guiding more than 300 fourth-graders from park-poor communities on trips to the San Gabriel Mountains and parks under the Department of the Interior's *Every Kid in a Park* initiative.

# Leadership Development

SGMF is building a diverse legacy of stewardship by empowering underserved community members to advocate for the protection and enhancement of our forest, foothills, parks, watersheds and rivers. We work to:

- Find, educate, develop, and encourage environmental stewards to care for our public lands with our Leadership Academy program.
- Provide volunteer and stewardship opportunities for community members and supporters of SGMF member organizations.



SGMF and other community members. They were some of the first to hop on the pilot shuttle from Arcadia Gold Line Station to Chantry Flats.

# Our Commitment



Janet Valenzuela (Foreground) leading a tour of the San Gabriel Mountains.

*"My Leadership Academy project was creating a six-week after-school program for 4th graders to learn about math, science and environmental justice. For many, it was their first time being in the mountains, even though they live so close by. I had reached out to the Forest Service for the trip and that connection has led me to work for the Forest Service as a Field Ranger. The program is a new asset to the Forest Service and monument that will hopefully remain permanent to make the San Gabriel Mountains a welcoming environment with friendly rangers, multiple languages and diverse cultural backgrounds."*

**-Janet Valenzuela, Field Ranger**  
*Angeles National Forest*

## Leadership Academy

- Celebrated the five-year anniversary of our Leadership Academy. By end of 2016, graduated 93 leaders, who completed 39 projects.
- Trained leaders completed several community projects.



(L) SGMF Leadership Academy, (R) Leadership Academy project participants.

## Shaping the Next Generation of Leaders

- Robust engagement resulted in 100 individual volunteers; 25 super-volunteers; and 5 activists who provide coalition leadership and execute projects.
- Member organizations hosted leadership programs that align with our core goals: A3PCON Asian American Environmental Leadership Academy, COFEM promotodores, and Amigos de los Rios docent training program.

## Engaging Communities

- Hosted and attended 70+ community events, including Earth Day celebrations; a Mental Health Hike and Every Kid in a Park (EKIP) outings; and bike rides.
- Collected 10,000 signatures in support of the SGMF Vision from engaged local citizens.



SGMF members visiting the San Gabriel Mountains National Monument.



SGMF members tabling and gathering petition signatures at REI in Arcadia.

# Community Engagement: By the Numbers

# Our Impact

**3,200**

public comments we collected for the monument plan



**2,522**

volunteers we brought to stewardship events



**300**

students we brought to the mountains for recreational/educational activities



**3,045**

community members we led on hikes



**3,110**

general letters of support we collected

# Looking Ahead

This year, we reached unanimous agreement to move forward with a 2-3 year plan to transition toward becoming 501c3 nonprofit, pursuing fiscal sponsorship as our first step. We are embarking on this new phase of development in an effort to better fund our policy work, projects, and programs. Our goal is to implement our vision of creating advocates with access to healthy, sustainable recreation for Angelenos.



*Amy Wong with Cortada Elementary School students from El Monte at the Eaton Canyon Nature Center in Pasadena. The outing was supported by the "Every Kid in the Park" initiative.*

# Growth, Focus, Development

**In 2017, we will continue to work to:**

- Protect our mountains, rivers and parks
- Ensure environmental justice for all
- Develop the next generation of leaders

**By:**

- Working with Metro on the Access to Parks/Open Space Plan.
- Engaging on Measure A for Parks community base building implementation.
- Supporting projects and programs that advance our vision and mission.
- Engaging on local and state water, parks and climate policy issues.
- Influencing the Forest Service to finalize a Monument Plan that is robust and fulfills the President's proclamation.
- Maintaining a robust community advocacy and leadership development program.



# Acknowledgments

## Designers

Climate Resolve, Jacob Cooper  
Bike San Gabriel Valley, Andrew Fung Yip

## Map Design

John Tangenberg  
Andrew Fung Yip

## Graphics

[boneswolbach.deviantart.com](http://boneswolbach.deviantart.com)

## Photographs

Cover: SGMF Stock Photos  
Page 1. (Top) Manny Herrera  
Page 2. (Top) Omar Gomez, (Bottom Left) Kristen Combs,  
(Bottom Middle and Right) SGMF Stock Photos  
Page 3. (Background) Andrew Fung Yip, (Left) Angel Perez  
Page 4. (Background) Kristen Combs, (Timeline) SGMF Stock  
Page 5. (Left) Andrew Fung Yip, (Right) Duyen Tran  
Page 6. (Left) Duyen Tran, (Top Right) Jackson Lam,  
(Bottom Right) Omar Gomez  
Page 9. SGMF Stock Photo  
Page 10. Omar Gomez  
Page 11. (Left) Omar Gomez, (Right) Andrew Fung Yip  
Page 12. (Left) Duyen Tran, (Right) Janet Valenzuela  
Page 13. (Left) Duyen Tran, (Top Right) Omar Gomez,  
(Bottom Right) Amy J. Wong  
Page 14. Amy J. Wong

# San Gabriel Mountains Forever



**10900 Mulhall Street  
El Monte, California 91731  
(626) 532-7218**

*For more information, contact SGMF  
Coordinator, Amy Wong:  
[Amy@sangabrielmountains.org](mailto:Amy@sangabrielmountains.org)*

**[www.sangabrielmountains.org](http://www.sangabrielmountains.org)**

